

Products Datasheet View

Class	Model Number	Life Hours	LED Type	LED Qty	Light (lumen)	Angle	Input Voltage	CCT (K)	CRI	Power (w)
High-Energy saving And Hi-Bright series	XT8-60C-CW	50000	Epistar	144	1078	120°	85~260V/AC	5900~6200	78	11
	XT8-60C-NW	50000	Epistar	144	1003	120°	85~260V/AC	3900~4200	80	11
	XT8-90C-CW	50000	Epistar	216	1589	120°	85~260V/AC	5900~6200	78	16
	XT8-90C-NW	50000	Epistar	216	1512	120°	85~260V/AC	3900~4200	80	16
	XT8-120C-CW	50000	Epistar	240	1768	120°	85~260V/AC	5900~6200	78	17.5
	XT8-120C-NW	50000	Epistar	240	1703	120°	85~260V/AC	3900~4200	80	17.5
	XT8-120C-CW2	50000	Epistar	288	2112	120°	85~260V/AC	5900~6200	78	21
	XT8-120C-NW2	50000	Epistar	288	2013	120°	85~260V/AC	3900~4200	80	21
	XT8-150C-CW	50000	Epistar	384	2386	120°	85~260V/AC	5900~6200	78	24
	XT8-150C-NW	50000	Epistar	384	2218	120°	85~260V/AC	3900~4200	80	24
Super High-Bright series	XT8-K-60C-CW	45000	Epistar	144	1431	120°	85~260V/AC	5900~6200	78	16
	XT8-K-60C-NW	45000	Epistar	144	1386	120°	85~260V/AC	3900~4200	80	16
	XT8-K-90C-CW	45000	Epistar	216	1922	120°	85~260V/AC	5900~6200	78	21
	XT8-K-90C-NW	45000	Epistar	216	1864	120°	85~260V/AC	3900~4200	80	21
	XT8-K-120C-CW	45000	Epistar	240	1941	120°	85~260V/AC	5900~6200	78	21
	XT8-K-120C-NW	45000	Epistar	240	1891	120°	85~260V/AC	3900~4200	80	21
	XT8-K-120C-CW2	45000	Epistar	288	2403	120°	85~260V/AC	5900~6200	78	24
	XT8-K-120C-NW2	45000	Epistar	288	2231	120°	85~260V/AC	3900~4200	80	24
	XT8-K-150C-CW	45000	Epistar	384	3798	120°	85~260V/AC	5900~6200	78	42
	XT8-K-150C-NW	45000	Epistar	384	3683	120°	85~260V/AC	3900~4200	80	42
High-Cost Effectove Series	ST8-60C-CW	40000	CHIMEI	144	841	120°	85~260V/AC	5900~6200	71	11
	ST8-60C-NW	40000	CHIMEI	144	786	120°	85~260V/AC	3900~4200	75	11
	ST8-90C-CW	40000	CHIMEI	216	1326	120°	85~260V/AC	5900~6200	71	16
	ST8-90C-NW	40000	CHIMEI	216	1273	120°	85~260V/AC	3900~4200	75	16
	ST8-120C-CW	40000	CHIMEI	240	1443	120°	85~260V/AC	5900~6200	71	17.5
	ST8-120C-NW	40000	CHIMEI	240	1319	120°	85~260V/AC	3900~4200	75	17.5
	ST8-120C-CW2	40000	CHIMEI	288	1708	120°	85~260V/AC	5900~6200	71	21
	ST8-120C-NW2	40000	CHIMEI	288	1623	120°	85~260V/AC	3900~4200	75	21
	ST8-150C-CW	40000	CHIMEI	384	2031	120°	85~260V/AC	5900~6200	71	24
	ST8-150C-NW	40000	CHIMEI	384	1961	120°	85~260V/AC	3900~4200	75	24

* The cover of LED Fluorescent tube can be milk or clear. The light output of milk will be less 10% than clear one.

WARNINGS AND CAUTIONS

- Suitable for use in open luminaires (fixtures).
- Do not use in outdoor fixtures.
- Do not use in enclosed fixtures.
- Use with triac dimmers.
- Do not use with emergency exit fixtures or with emergency lighting.
- Turn off power before changing lamp.

CAUTION: Risk of electric shock. Use in dry location only.

NOTES: This device complies with Part 18 of the FCC rule. This product may cause interference with other devices. If interference occurs, change the location of the products involved. This RFLD device complies with Canadian ICES-005.

Product Naming

XT8 **120** **C** **W**
 chip type T8 tube tube length tube cover type Color



Light for better learning and working

LED Fluorescent

60/90/120/150/180 cm

Longer life, high energy-saving

©2011 LED Lighting Company

All rights reserved. Reproduction in whole or part is prohibited without the prior written consent of the copyright owner.



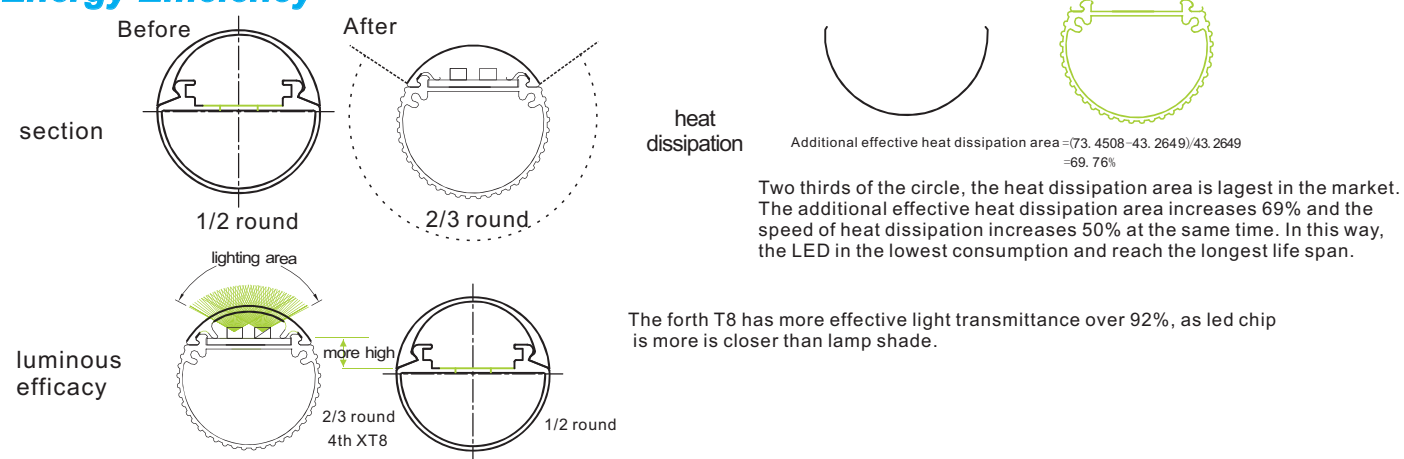


SchoolVision – light for better learning and working

We all want our children to have the benefit of a healthy, stimulating learning environment – a classroom where they can feel at ease and concentrate, so they get the most out of every schoolday. At the same time, we know education budgets are under unprecedented strain.

Our SchoolVision concept offers the ideal solution. This innovative, energy-efficient classroom lighting system improves learning conditions, and thus the learning process, so that teacher and pupils achieve better results.

Energy Efficiency



Energy Efficiency

Estimated Lighting Costs Using Standard 50W Fluorescent	
Present Wattage	50W
x Annual Operating Hours	3000 hrs
=	150,000 watts per year
÷ 1,000	= 150 kWh per year
x kWh rate of \$0.10	= \$15 per year
x 100 lamps per space	= \$1500 annual energy cost per space
Estimated Lighting Costs Using a 20W XT8-120C-CW	
Present Wattage	20W
x Annual Operating Hours	3000 hrs
=	60,000 watts per year
÷ 1,000	= 60 kWh per year
x kWh rate of \$0.10	= \$6 per year
x 100 lamps per space	= \$600 annual energy cost per space
Total Estimated Annual Energy Costs Saving*	= \$900

*Based on 100 lamps per space operating at 3,000 hours per year.

LED Power	LED Model	Fluorescent Power	LED Power	LED Model	Fluorescent Power	LED Power	LED Model	Fluorescent Power
11W	XT8-60	= 28W	16W	XT8-K-60	= 37W	11W	ST8-60	= 22W
20W	XT8-120	= 50W	24W	XT8-K-120	= 55W	20W	ST8-120	= 41W
24W	XT8-150	= 65W	42W	XT8-K-150	= 97W	24W	ST8-150	= 50W

* Fluorescent average live hours: 4000hrs
* LED Fluorescent average live hours: 50000hrs

This example shows an application of 100 lamps accenting a space, operating 3,000 hours per year at a cost of \$0.10 per kWh. Energy costs may vary depending on geographic region.

As you can see using 100pcs XT8-120C-CW can light a space for only \$600 per year! This is a \$900 savings compared to a 50W standard fluorescent. Potential savings from the reduction in HVAC costs as a result of using a low wattage lamp that emits less heat is an additional benefit not included in this example.

** Light output of the 20w xt8-120c-cw at 2013 lumens 194lx compares to the 50w fluorescent at 289lm and 198lx.

Choice

- XT8-K
super high bright T8 tube.
- Xt8
super high energy effective T8 tube.
- St8
high cost effective T8 tube.

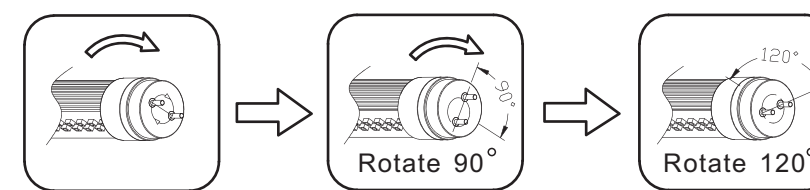
3 Years warranty	EVERLIGHT Best 3528	Epistar	94lm/w	Hi-Bright
5 Years warranty	EVERLIGHT Best 3528	Epistar	101lm/w	Hi-Bright
3 Years warranty	CHIMEI	CHIMEI	82lm/w	Hi-Bright

Rank	Brightness	Energy Effective	Price	Life Hours
Best 1st	XT8-K	Xt8	St8	Xt8
2nd	Xt8	XT8-K	XT8/XT8-K	XT8-K
3rd	St8	St8		St8

Choice

Model Number	1M	2M	3M	Model Number	1M	2M	3M	Model Number	1M	2M	3M
XT8-60C-CW	288	98	43	XT8-K-60C-CW	489	139	73	ST8-60C-CW	278	91	41
XT8-60C-NW	269	88	43	XT8-K-60C-NW	435	121	65	ST8-60C-NW	222	65	32
XT8-90C-CW	403	130	60	XT8-K-90C-CW	612	173	92	ST8-90C-CW	403	130	60
XT8-90C-NW	376	123	60	XT8-K-90C-NW	543	152	81	ST8-90C-NW	323	92	42
XT8-120C-CW	552	178	82	XT8-K-120C-CW	656	191	101	ST8-120C-CW	533	165	77
XT8-120C-NW	516	168	77	XT8-K-120C-NW	571	176	81	ST8-120C-NW	443	122	58
XT8-120C-CW2	612	173	92	XT8-K-120C-CW2	734	208	110	ST8-120C-CW2	611	169	78
XT8-120C-NW2	543	152	81	XT8-K-120C-NW2	652	182	97	ST8-120C-NW2	468	135	64
XT8-150C-CW	687	223	102	XT8-K-150C-CW	991	281	149	ST8-150C-CW	687	166	76
XT8-150C-NW	644	206	96	XT8-K-150C-NW	880	246	131	ST8-150C-NW	557	166	76

Rotated T8

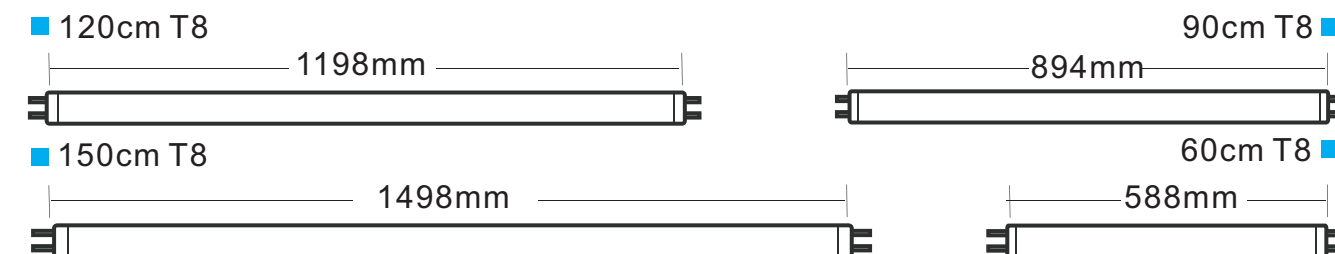


Why choose rotated XT8

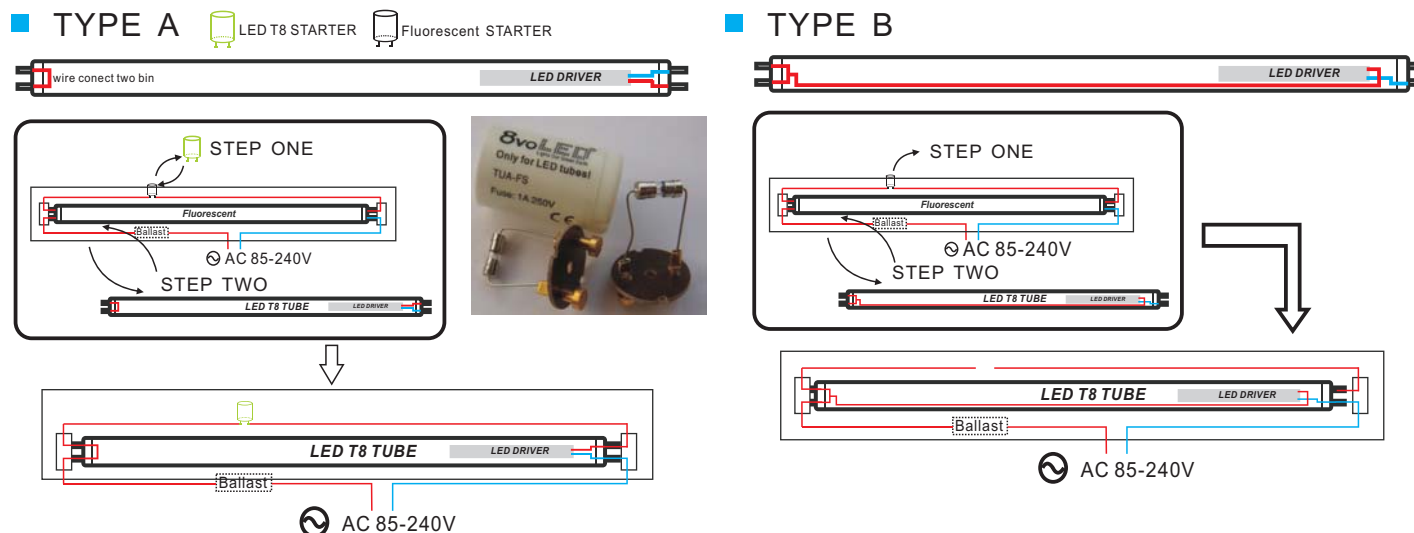
Compared with traditional fluorescent tube, LED tube is lighting in single side. If the base of the T8 is tilted, the light angle will be deviated. Our rotated T8 gives your T8 a good performance in every angle. T8--- Make the Change.

Attention: If you do not need used rotated XT8, Locked XT8 is play better in quality.

Dimension



Installation



STEP ONE: Replace Fluorescent starter with LED T8 Starter (We will send it to our customer free)

STEP TWO: Replace Fluorescent with LED T8 Tube

STEP ONE: Remove Fluorescent starter
STEP TWO: Replace Fluorescent with LED T8 Tube